

Drive Yourself Wild

Drive Yourself Wild

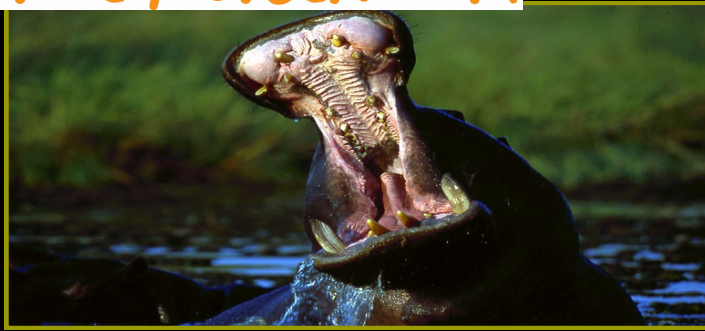
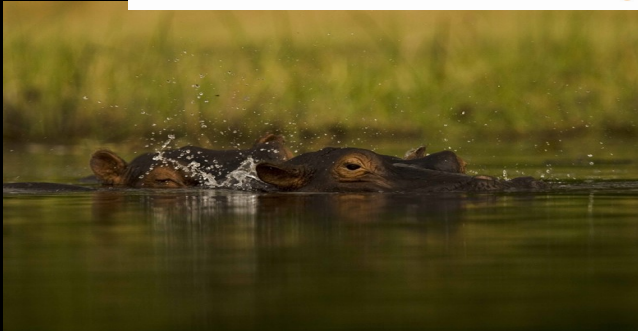
Drive Yourself Wild

4x4 Rentals & Self Drive Safaris

Botswana

Travel Adventures

Drive Yourself Wild



HIPPO ROUTE

Day 1: Arrive in Maun, Vehicle briefing, Overnight Maun Camping

On arrival you will be met by a representative from Travel Adventures. You will receive a comprehensive 1-2 hour briefing of the vehicle & equipment & the route you will be driving. Following this you can buy provisions in Maun for the next 9 days on your Self Drive Adventure. Your first night will be spent

camping in Maun.

Self Drive Specialists

Day 2: Camping in Moremi Game Reserve

The following morning you will depart early for Moremi Game Reserve. This drive will take you 4-6 hours depending on what game & birds you encounter on the way into the Parks. You will spend the next 2 nights camping in Moremi exploring on game drives by day.

Day 3: Camping in Moremi Game Reserve

Day 4: Camping in Khwai Area Moremi Game Reserve

Following breakfast you will pack up camp & drive to the Khwai area of the Moremi Game Reserve. The drive will take you around 4-5 hours depending on what game you see on the way. You will spend 2 nights camping in Khwai exploring in your self drive vehicle by day.

Day 5: Camping in Khwai Area Moremi Game Reserve

Day 6: Camping Savuti Area

Following breakfast you will pack camp and depart Khwai heading for the Savuti region of Chobe National Park. The drive will take you 4-6 hours depending on the game along the way. You will spend 2 nights camping in Savuti and there is no better time to visit Savuti as the Savuti Channel flowed in 2010 for the first time in 30 years! There are also bushmen paintings in Savuti and are signposted on the right side of the main road heading into Savuti. This is the only area in Savuti that you are allowed to exit your vehicle (other than the campsite) and remember not to touch the paintings.

Day 7: Camping Savuti Area

Day 8: Camping in Ihaha Campsite— Chobe National Park

After breakfast and packing camp you will drive from the Savuti area to the Chobe River area of Chobe National Park. The Chobe area is renowned for its spectacular herds on elephants along the Chobe River and you will spend your last 2 nights camping in this area and game driving by day. The drive from Savuti to Chobe will take approx 5-6 hours.

Day 9: Camping in Ihaha Campsite— Chobe National Park

Day 10: Kasane Drop off vehicle

It's time to pack camp for the last time and head to Kasane town to meet the Travel Adventures representative to drop off the vehicle.





HIPPO ROUTE EXTENSION 1

Day 10: Kasane to Nata

On arrival in Kasane you will buy more provisions and fill the vehicle with fuel for your next 5 days on your Self Drive Adventure. You will then drive South from Kasane to Nata which is 300kms—be careful of elephant on the road and look out for wild dogs. The drive will take approx 3-4 hours and is on a tar road. You will spend the night camping at Nata Lodge.

Day 11: Camping at Kubu Island

The following morning you will depart early for Kubu Island and the drive is 90kms off the main road and will take you at least 4-5 hours.

Day 12: Makgadikgadi Pans (Nxai Pan, Baines Baobabs & Njuca Hillls)

You will depart Kubu Island early and head toward the Makgadikgadi Salt Pans where you will spend the next 2 nights camping and exploring the area in your self drive vehicle by day.

Day 13: Makgadikgadi Pans (Nxai Pan, Baines Baobabs & Njuca Hillls)

Day 14: Khumaga

After breakfast you will leave the pans & head towards Khumaga for the last night camping & explore the area in your vehicle by day.

Day 15: Maun

Following breakfast and packing camp you will head back to Maun to drop off the vehicle. This drive will take approx 2-3 hours to Maun.

HIPPO ROUTE EXTENSION 2

Day 10: Kasane to Caprivi

On arrival in Kasane you will buy more provisions and fill the vehicle with fuel for your next 5 days on your Self Drive Adventure. You will then either overnight camping in Kasane or drive to Katima Mulilo in Namibia and camp there. The drive to Katima is on a tar road and takes approx 2 hours via the Ngoma Border gate.

Day 11: Kwando River in Caprivi (Namibia)

You will spend the next 2 nights camping along the Kwando River - Caprivi, exploring the area game viewing by day .

Day 12: Kwando River in Caprivi (Namibia)

Day 13: Ngepi Camp (Namibia)

Following breakfast you will head for Ngepi Camp on the banks of the river where you will spend the night in their campsite.

Day 14: Tsodilo Hills—camping fee paid direct at Tsodilo Hills.

After breakfast you will depart Namibia and go thru the border formalities into Botswana and spend the night camping at Tsodilo Hills. There are local guides who for a nomimal fee will show you the bushmen paintings and tell you about the local history of the area.

Day 15: Maun

Following breakfast and packing camp you will head back to Maun to drop off the vehicle. This drive will take approx 4-5 hours to Maun.

Drive Yourself Wild

Drive Yourself Wild

Drive Yourself Wild

4x4 Rentals & Self Drive Safaris

Travel Adventures

Botswana

Drive Yourself Wild



10 DAY HIPPO ROUTE 2019 RACK RATES:

HIGH SEASON July—Oct

Toyota Landcruiser US\$ 1480 per person sharing based on 2 pax per Landcruiser

Toyota Double Cab Hilux US\$ 1145 per person sharing based on 2 pax per Hilux

MID SEASON Apr—June / Nov & Dec

Toyota Landcruiser US\$ 1075 per person sharing based on 2 pax per Landcruiser

Toyota Double Cab Hilux US\$ 795 per person sharing based on 2 pax per Hilux

GREEN SEASON Jan—Mar

Toyota Landcruiser US\$ 880 per person sharing based on 2 pax per Landcruiser

Toyota Double Cab Hilux US\$ 650 per person sharing based on 2 pax per Hilux

Campsite and Park Entrance Fees for Hippo Route US\$ 614 per person (non commissionable)

5 DAY OPTIONAL EXTENSION:

HIGH SEASON July—Oct

Toyota Landcruiser Rack US\$ 673 per person sharing based on 2 pax per Landcruiser

Toyota Double Cab Hilux US\$ 543 per person sharing based on 2 pax per Hilux

MID SEASON Apr—June / Nov & Dec

Toyota Landcruiser US\$ 508 per person sharing based on 2 pax per Landcruiser

Toyota Double Cab Hilux US\$ 383 per person sharing based on 2 pax per Hilux

GREEN SEASON Jan—Mar

Toyota Landcruiser US\$ 415 per person sharing based on 2 pax per Landcruiser

Toyota Double Cab Hilux US\$ 313 per person sharing based on 2 pax per Hilux

Campsite and Park Entrance Fees for Pans & Baobabs Extension US\$ 260 per person (non commissionable)

Campsite and Park Entrance Fees for Caprivi Extension US\$ 100 per person (non commissionable)

Excluded: Fuel, Cross border fees, Food, Drinks, Additional Insurance, Items of a personal nature.

